

Manual



# **Strobe Energy**

## **DMX 2000**



---

## Table of Content

1. Safety instructions .....	3
1.1. FOR SAFE AND EFFICIENT OPERATION .....	3
2. Product overview .....	5
3. Control .....	6
3.1. DMX mode .....	6
3.2. Manual mode .....	6
3.3. Sound-to-light mode .....	7
4. Overheat protection .....	7
5. Technical data .....	7



---

## 1. Safety instructions



- This device is suitable for indoor use (not outdoors) only.
- All modifications to the device will void the warranty.
- Repairs are to carry out by skilled personnel only.
- Use only fuses of the same type and original parts as spare parts.
- Protect the unit from rain and humidity to avoid fire and electric shocks.
- Make sure to unplug the power supply before opening the housing.

### 1.1. FOR SAFE AND EFFICIENT OPERATION

#### **Be careful with heat and extreme temperature**

Avoid exposing it to direct rays of the sun or near a heating appliance.

Not put it in a temperature bellow 32°F /0°C, or exceeding 104°F /40°C.

#### **Keep away from humidity, water and dust**

Do not place the set in a location with high humidity or lots of dust.

Containers with water should not be placed on the set.

#### **To avoid placing on un-stable location**

Select a level and stable location to avoid vibration.

#### **Do not use chemicals or volatile liquids for cleaning**

Use a clean dry cloth to wipe off the dust, or a wet soft cloth for stubborn dirt.

#### **If out of work, contact sales agency immediately**

Any troubles arose, remove the power plug soon, and contact with an engineer for repairing, do not open the cabinet by yourself, it might result a danger of electric shock.

#### **Take care with the power cable**

Never pull the power cable to remove the plug from the receptacle, be sure to hold the plug.

When not using the device for an extended period of time, be sure to disconnect the plug from the receptacle.

#### **Risk of Health!**

The device causes (UV) radiation. Therefore, keep a safe distance (at least 1.5m) to people and objects.

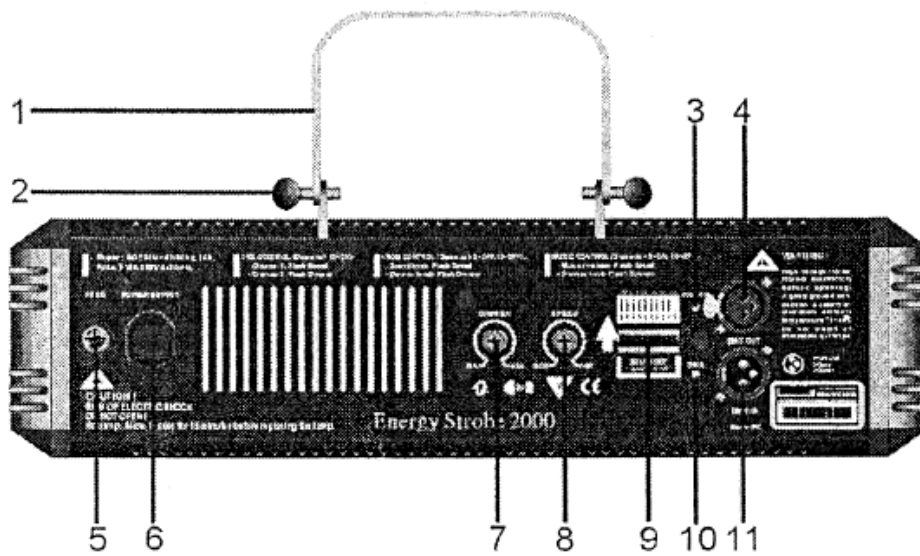


---

By fast flashing, the risk of an epileptic seizure increases. Therefore do not install it in danger zones (such as stairs, exit routes ...). Point out the visitors before operating on the use of a strobe. Avoid prolonged flash sequences.

**Important: Damages caused by the disregard of this user manual are not subject to warranty. The dealer will not accept liability for any resulting defects or problems. Make sure the electrical connection is carried out by qualified personnel. All electrical and mechanical connections have to be carried out according to the European safety standards.**

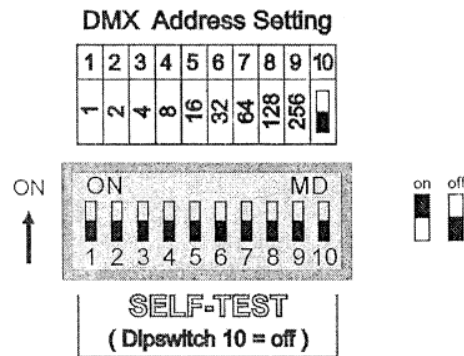
## 2. Product overview



1. Adjustable hanging bracket
2. Fastening screw
3. Power LED
4. DMX Out
5. Fuse
6. Power input
7. Dimmer
8. Speed
9. Dip-Switches 1-10
10. DMX LED
11. DMX In

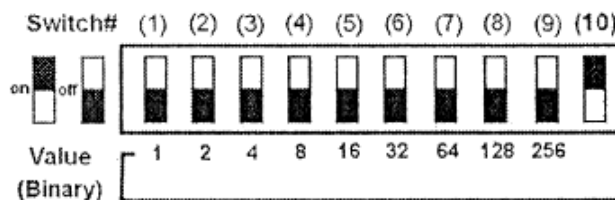


### 3. Control



#### 3.1. DMX mode

To get into the DMX, you have to set the Dip-Switch 10 to „On“.

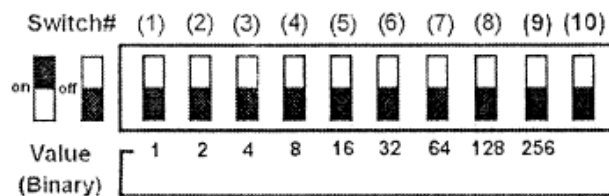


- With the help of the Dip-Switches 1-9 you can set the required DMX address. The active Dip-Switches amount to the DMX address.
- In the DMX mode the channels are as follows:
 

Channel 1	Speed
Channel 2	Dimmer
- The DMX LED will begin to flash when there a DMX input signal.

#### 3.2. Manual mode

To get into the DMX, you have to set the Dip-Switch 9 and 10 to „Off“.

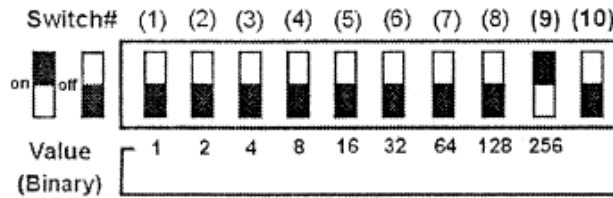


- Speed and dimmer are set with the help of the rotaries on the backside of the device.



### 3.3. Sound-to-light mode

To get into the DMX, you have to set the Dip-Switch 9 to „On“ and the Dip-Switch 10 to „Off“.



- The speed is controlled by the bass music effect and the dimmer with the help of the rotary on the backside of the device.

### 4. Overheat protection

The internal micro processor will automatically limit the flash dimmer level when the lamp flashes for a long period of time. The lamp can flash continuously for about 5 minutes when in the highest flash speed level and in the maximum flash dimmer level. After that the flash dimmer will gradually decrease to the level of 50%.

When the inside thermostat's temperature exceeds 100°C the lamp will automatically switched off.

### 5. Technical data

Power supply	
Voltage	120-230V AC, 50/60Hz
Power consumption max.	800W
Connections	
XLR in/out	XLR 3pin
Control	
Sound-to-light	Yes
DMX512	2 channels
Hardware	
Protection class	IP20
Skill	Indoor
Dimensions (LxBxH)	400x85x150mm
Weight	2,15kg



---

**Importer:**

**B & K Braun GmbH**

**Industriestraße 2**

**D-76307 Karlsbad**

[www.bkbraun.com](http://www.bkbraun.com)

[info@bkbraun.com](mailto:info@bkbraun.com)

